

# Welcome

## ICB Provider Engagement event

### 24/10/24





**Hertfordshire and  
West Essex Integrated  
Care System**

**Peter Bullen - HCPA**

**Piya Hussain - Associate Director All  
Age Continuing Care, HWE ICB**

**Karen Stagg - Director of Continuing  
Healthcare, HWE ICB**



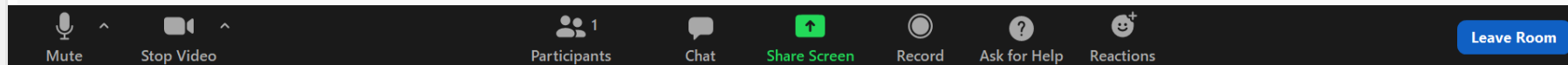


# Housekeeping

- For now, microphones off unless asked to speak or speaking
- **We really like questions** - For questions, please add these to the chat box, we will come to these at the end, you may be asked to elaborate over the microphone
- We will share a recording of this event, plus all resources and slides shown
- If you have questions post event – Get in touch with the care provider hub

## In-Meeting Controls

The attendee controls appear at the bottom of your screen. To access the meeting controls, just move your mouse in the Zoom window.



Attendees have access to these features:

### Mute or Unmute:



To mute or unmute your microphone, click the ^ arrow next to the picture of the microphone.

**Please keep your microphone on mute during the presentation**

### Start Video or Stop Video:



To turn your camera on or off, click the ^ arrow next to the picture of the video camera.

**Please keep your video off during the presentation.**



Hertfordshire and  
West Essex Integrated  
Care System



Hertfordshire and  
West Essex  
Integrated Care Board



# NHS All Age Continuing Care HWE ICB

# NHS All Age Continuing Care

All Age Continuing Care (AACC) is a collective term for services provided by the NHS. These services assess and provide funding for the care of individuals of all ages to meet their ongoing health and care needs.

The services include:

- Continuing Healthcare (CHC);
- Funded Nursing Care (FNC);
- Children and Young Peoples' Continuing Care (CYPCC);

NHS Continuing Healthcare is an ongoing package of health and social care that is arranged and funded solely by the NHS where an individual is found to have a primary health need. Such care is provided to an individual aged 18 or over, to meet the needs that have arisen because of disability, accidental or illness.

The national framework for NHS Continuing Healthcare and NHS-funded nursing care sets out the principles and processes for deciding eligibility - National Framework for NHS Continuing Care and NHS-funded Nursing Care - July 2022 (Revised) - corrected May 2023 ([publishing.service.gov.uk](https://publishing.service.gov.uk))

An individual is eligible for NHS Continuing Healthcare if they have a 'primary health need'. In order to determine whether an individual has a primary health need, a detailed assessment and decision-making process must be followed, as set out in this National Framework.

Children and Young People Continuing Care

- A continuing care package is required when a child or young person has needs arising from disability, accident or illness that cannot be met by existing universal or specialist services alone - National Framework for Children and Young People's Continuing Care ([publishing.service.gov.uk](https://publishing.service.gov.uk))



# ICB Responsibilities

The ICB is responsible for assessing and commissioning continuing healthcare care (CHC) packages to meet the reasonable health care needs of Citizens of HWE who are deemed eligible for NHS CHC.

The ICB has a duty to meet the healthcare needs of an individual, whilst considering the best use of resources for the population it serves.

The ICB has an ongoing responsibility to fund the care for individuals outside hospital settings where the individual has been assessed to have a 'primary health need' as set out in the National Framework. This care can be provided in a variety setting.

The ICB is responsible and accountable in establishing, within a commissioning and contracting framework, the costs for care services which will be subject to an annual review.



Hertfordshire and  
West Essex Integrated  
Care System



# Care Home Placements

Where an individual has been assessed as needing care in a care home environment, the role of the ICB is to identify and commission a suitable placement.

The ICB will endeavour to identify a choice of care home placements within the individual's preferred geographical area, however this is dependent on the availability of care home vacancies, the ability of specific care homes to meet the individual's needs, and the care home's acceptance of the ICB weekly fee.

Where an individual has been awarded Fast Track funding, where the objective is to secure services for the individual as quickly as possible, less choice may be available.

A weekly fee which the ICB reasonably considers sufficient to fund a care home placement for the individual will be agreed. The ICB is unable to commission placements within care homes that do not accept the agreed weekly rate.

In some circumstances, an individual may wish to live in a care home that has not been identified by the ICB. In these circumstances, so long as the fee for the placement is comparable to the fee agreed by the ICB, the care home can meet the individual's needs and the care home satisfies appropriate criteria set by the Care Quality Commission (CQC) and local authority social services, the ICB will consider this option.



Hertfordshire and  
West Essex Integrated  
Care System



# Funded Packages of Care at Home (including those provided via Personal Health Budget)

The ICB will consider funding packages of care at home providing care can be delivered safely without undue risk to the individual, the staff or other members of the household (including children), and the level of risk that is acceptable to the individual, such as:

- A package of care more than 8 hours a day would indicate a high level of need and complex
- Individuals who need waking night care indicates a high level of supervision is required at night and exceeding more than 8 hours
- Placements are generally deemed more appropriate for individuals who have highly complex health needs and commissioning care at home cannot replicate a nursing home setting
- Where there is a need for the presence of a Registered Nurse over a 24-hour continuous period, the ICB would only be expected to provide this within a care home with a registered nursing workforce.

Each assessment will consider the appropriateness of a home-based package of care, considering the range of factors listed above and the principles of HWE Choice and Equity Policy.



Hertfordshire and  
West Essex Integrated  
Care System





# Transfer of cases from Local Authority

If an individual who has been funded by social services becomes eligible for NHS CHC, the ICB will apply the NHS Continuing Healthcare Framework and in doing so will consider the best use of resources for their population, whilst meeting the healthcare needs of an individual.

The ICB will work with social services to ensure that the changes to commissioning arrangements are as seamless as possible and seek to ensure that the care required continues with minimum disruption to the individual.

Equally, where a provider of care significantly increases their pricing and an alternative provider can deliver the same level of care for better value, the ICB will consider a change in provider. During this process, the ICB will ensure the individual is fully informed.

Where the ICB deems that the current care package is not appropriate and does not approve an amended domiciliary care package, the individual will be offered an alternative care package approved by the ICB.



# Exceptional Circumstances

The ICB recognise its duty to consider effective and efficient use of resources, in order to deliver NHS Continuing Healthcare to the population of HWE.

The ICB may not agree to a care package or placement that is preferred by an individual. Where the cost of the care required is available at a more competitive rate the individual will be asked to choose an alternative which aligns to the payment rates set by the ICB.

The ICB is required to provide services that meet reasonable requirements. Exceptionality is determined on a case-by-case basis and will require a clear clinical rationale and agreement by the ICB All Age Continuing Healthcare Director or those with delegated responsibility.



# Complex Case Panel

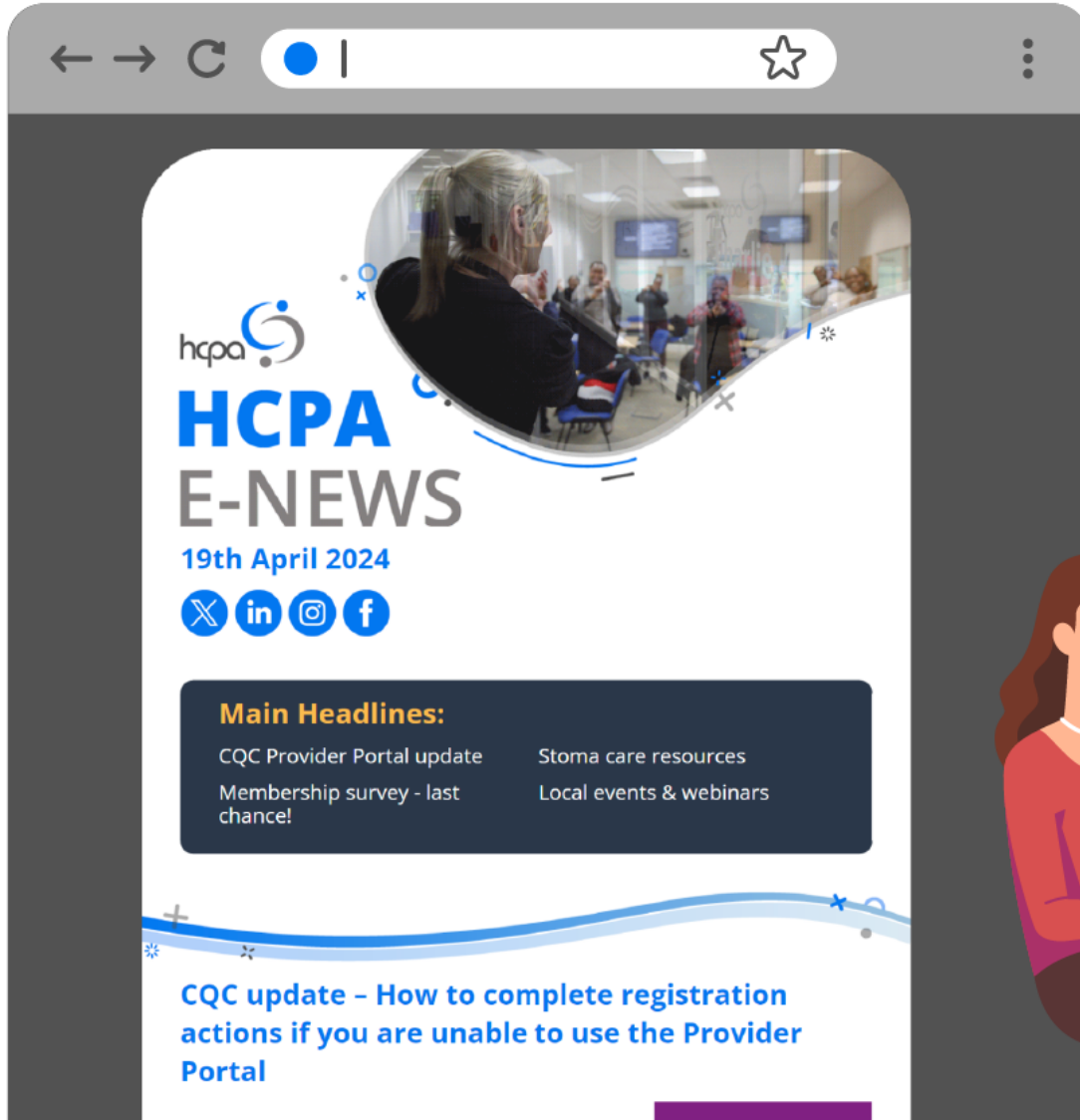
Decisions will be referred to the Complex Cases Panel where the cost of the individual's choice of care package is beyond the delegated financial limits whereby the ICB has substantive concerns in relation to the suitability, safety, value for money or otherwise of the individual's choice of care package, this could include the individual's preference is for:

- A care at home package (rather than a care home package).
- A provider outside of one identified by the ICB;
- Care outside of the geographical area of the ICB.

The Panel will then refer its recommendation to the ICBs Scheme of delegation as laid out in the Standing Financial Instructions for authorisation.



# HCPA e-news



Stay up to date with HCPA e-news

- **Commissioning opportunities and tender information**
- Education and support for regulation and inspection
- Changes to national / guidance
- Local alerts

**ANYONE** can subscribe  
at [www.hcpa.info/news](http://www.hcpa.info/news)



# The HCPA Resource Library

*Everything you need, all in one place.*

Visit: [hcpa.info/members-zone](https://hcpa.info/members-zone)

Available to everyone: 24/7 access

No login or password required

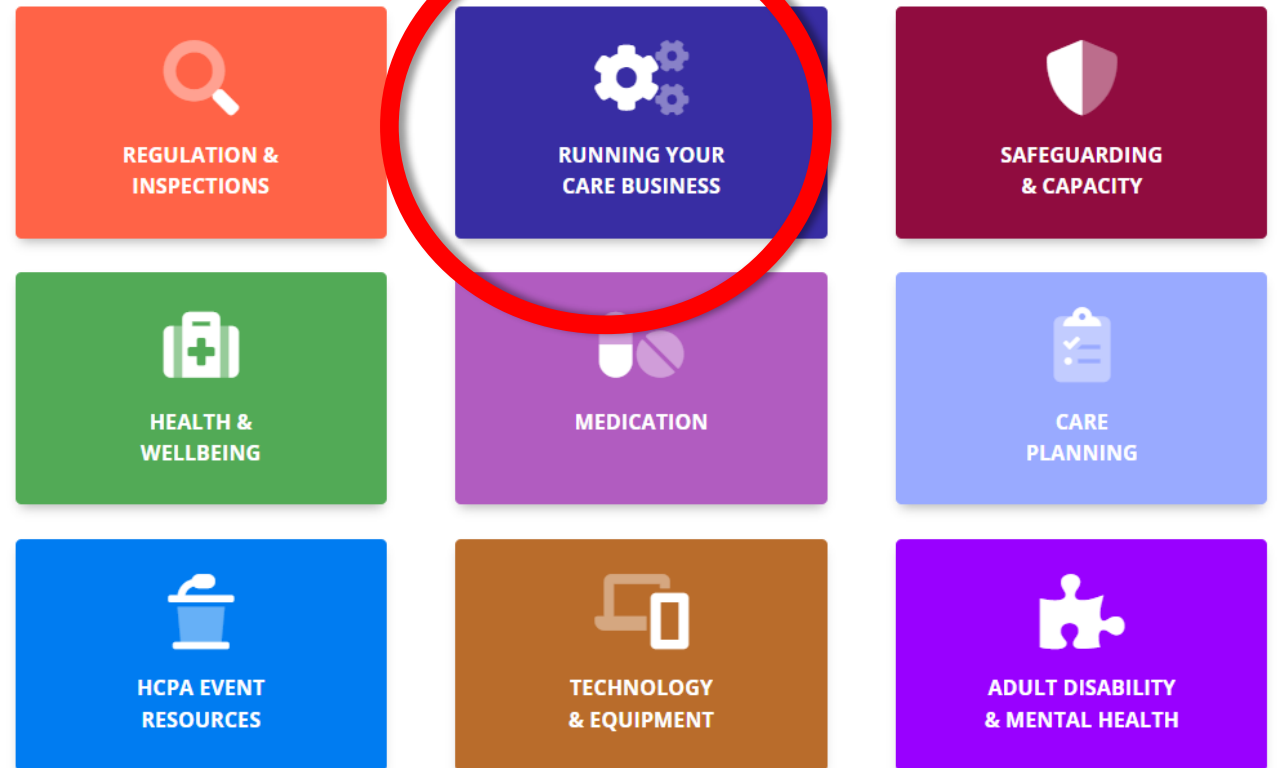
Includes local and national resources, tools,  
guides....a library of resources

Perfect tool to support your business



## The Resource Library

The Resource Library (formerly known as the Members Zone) is here to help all HCPA Members access local and national resources, tools, guides, and contacts in a wide variety of areas.



# The HCPA Care Provider Hub *Providing Peace of Mind...*

## ASK US ANYTHING!

We are **your** support service, here to answer **your** questions on all topics Adult Social Care related.



- Govt guidance, laws, standards and expectation.
- All infection control
- Liaison with Herts County Council.
- Funding, contracting and commissioning.
- Staff wellbeing and recognition.
- HR, Staffing and Recruitment.
- Training and education.
- Business continuity.
- Data protection.
- Monitoring.
- Equipment.
- Insurance.

Your hub, your support service...

01707 708108 | [assistance@hcpa.co.uk](mailto:assistance@hcpa.co.uk)  
Mon - Friday, 9am - 5pm [www.hcpa.info/hub](http://www.hcpa.info/hub)

HCPA: 'Sharing best practice in care through partnership'



Smooth seas do not make skilful sailors

## Challenges & Solutions



<https://forms.office.com/e/JbTzQjgRsg>

## "Set the agenda"

- *What are your challenges?*
- *How can we help?*



Thanks for joining us.

